

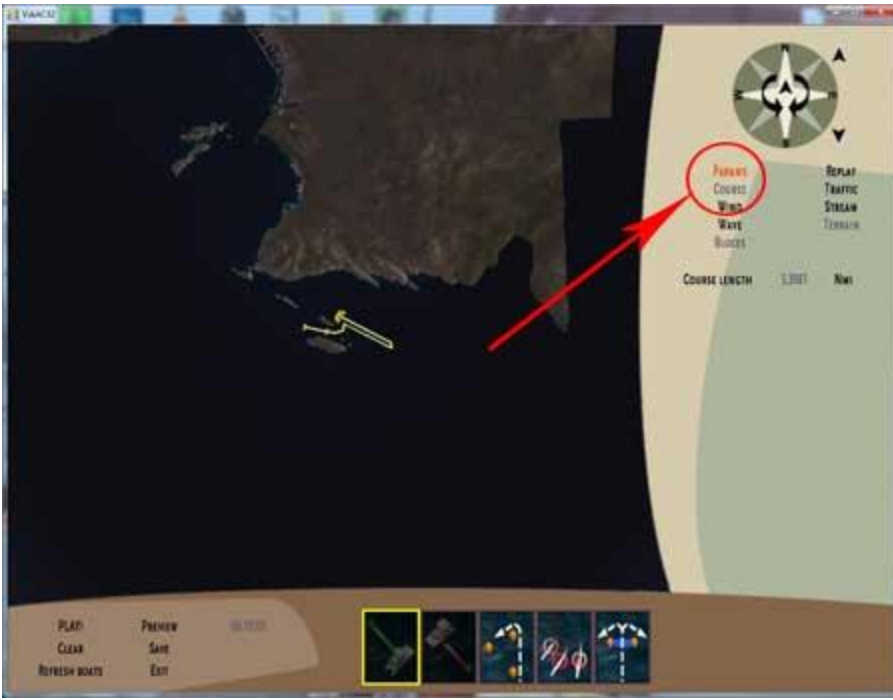
To Play in Solo Mode against Computer controlled adversaries, you need to edit each map to allow AI Boats.

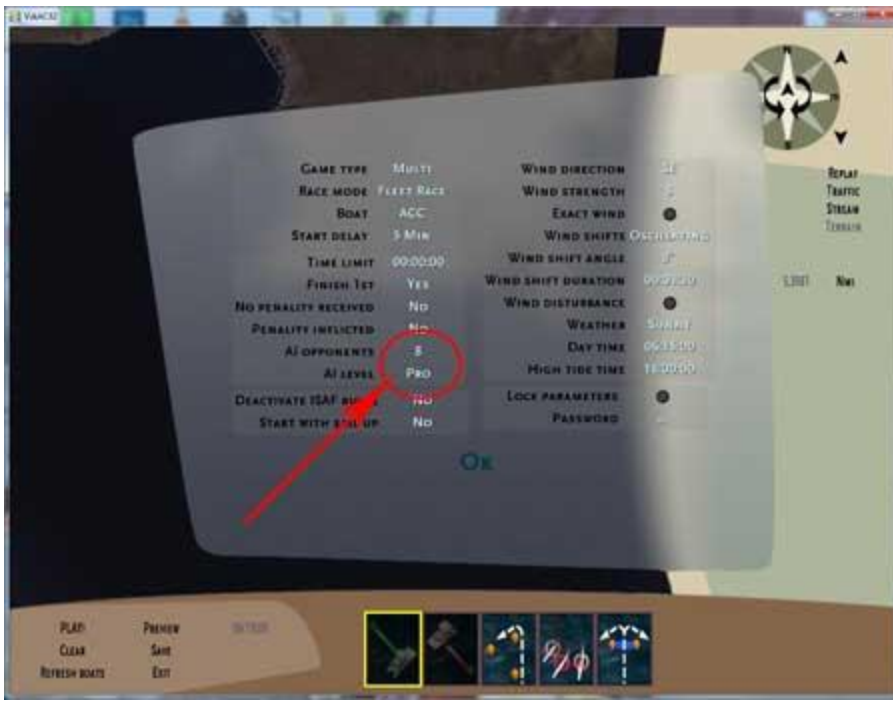
Before editing a map, you must enable the AI boats in the editor by typing the word 'friends' in the 1<sup>st</sup> menu screen, while keeping the right mouse button pressed down. Then edit the map parameters and save it.

Now when you play this map in solo mode, there will be up to 8 opponents on the water with you.









Left click on the AI Opponents & AI level until you have selected what you want.

Don't forget to save the map after you are done. Now play in Solo Mode.